

KAYNAK BOYUNLU FLANŞ PN 100



TS EN 1092 - 1 + A1 TİP 11
DIN 2637

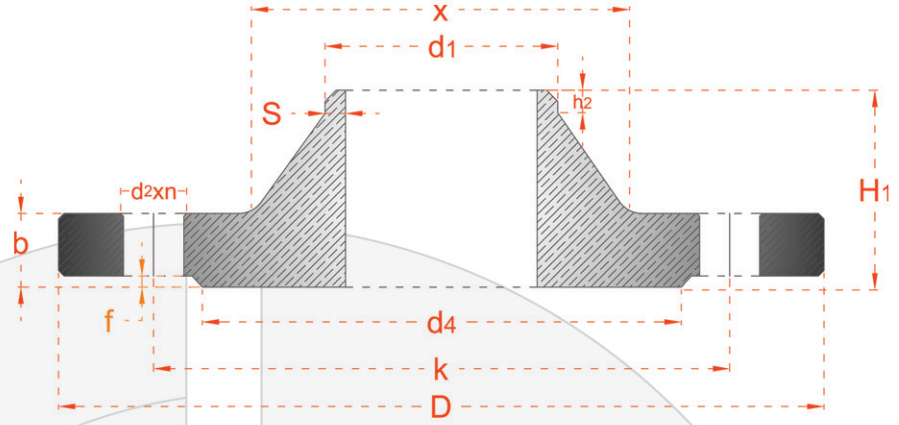


E.M.P.
www.emp.com.tr
www.empflans.com

WELDING NECK FLANGE PN 100



EN 1092 - 1 + A1 TYPE 11
DIN 2637



BORU/PIPE	FLANŞ / FLANGE						BOYUN/ NECK			RAISED FACE		DELİKLER/DRILLINGS			AĞIRLIK WEIGHT	
	DN	d1	D	b		H ₁		X	S	h2	d ₁	f	k	n		vida /screw
EN 1092-1				DIN	EN 1092-1	DIN										
10	17.2	100	20	20	45	45	32	1.8	6	40	2	70	4	M12	14	1.1
15	21.3	105	20	20	45	45	34	2.0	6	45	2	75	4	M12	14	1.2
20	26.9	130	22	22	48	48	42	2.6	8	58	2	90	4	M16	18	2.0
25	33.7	140	24	24	58	58	52	2.6	8	68	2	100	4	M16	18	2.6
32	42.4	155	24	24	60	60	62	2.9	8	78	2	110	4	M20	22	3.2
40	48.3	170	26	26	62	62	70	2.9	10	88	2	125	4	M20	22	4.1
50	60.3	195	28	28	68	68	90	3.2	10	102	2	145	4	M24	26	5.9
65	76.1	220	30	30	76	76	108	3.6	12	122	2	170	8	M24	26	7.9
80	88.9	230	32	32	78	78	120	4.0	12	138	3	180	8	M24	26	8.9
100	114.3	265	36	36	90	90	150	5.0	12	162	3	210	8	M27	30	13.7
125	139.7	315	40	40	105	105	180	6.3	12	188	3	250	8	M30	33	22.7
150	168.3	355	44	44	115	115	210	7.1	12	218	3	290	12	M30	33	30.2
200	219.1	430	52	52	130	130	278	10.0	16	285	4	360	12	M33	36	52.8
250	273.0	505	60	60	157	157	340	12.5	18	345	4	430	12	M36	39	81.4
300	323.9	585	68	68	170	170	400	14.2	18	410	4	500	16	M39	42	122.0
350	355.6	655	74	74	189	189	460	16.0	20	465	4	560	16	M45	48	165.0

Ölçüler mm olarak verilmiştir.
Çelik ve paslanmaz üretilebilir.

Dimensions are in mm.
Steel and stainless steel can be produce.